

# COMPANY PROFILE

Sadharan Bima Tower (Level - 7)  
37/A Dilkusha C/A,  
Dhaka - 1000  
Tel : (88 02) 9588230,  
Fax : 9575934  
e-mail : [info@icon-infotech.net](mailto:info@icon-infotech.net)



**icon**  
i n f o t e c h

**icon infotech limited**

[www.icon-infotech.net](http://www.icon-infotech.net)

## Introduction

Icon Infotech Ltd (IIL) is an IT enabled services providing company offering special services and solutions to a wide range of customers. IIL offers full design and integration of IT enabled services with customized network security, service optimization based on hardware and software tools and application integration. Our software wing is mainly working in Financial sectors for office automation, Back office broker for security organization, software solutions for leasing and financing company and specially some unique solutions for banks (Like Cyber security, currency counting machine with fake note detector, online currency counting software, online training solution, complete note management etc).

Our main goal is client satisfaction. We do not convince client to choose our solutions instead we choose solutions to ensure client satisfaction. Since forming, IIL has designed and implemented solutions for companies in different parts of Bangladesh to deploy simple and complex service and solutions for various customers. Swimming around the latest technology and ideas, we believe we are capable to provide the best solutions making the customers intention as our main objectives. We like listen to the customers instead of convincing them.

## Company Background

Icon Infotech Ltd. is Information and Communication Technology Service Provider based in Dhaka, Bangladesh. Icon Infotech Ltd. incorporated in 2010 to serve the growing Information & Communication markets in Bangladesh. Throughout this journey Icon a full range of IT and Communication Solutions provider starts from planning, designing, implementation project management. Icon's overall business philosophy is based on long term relationship model.

Icon Infotech Ltd. believes in business return from long term ultimate customer experience. The company always focused in growing the business along with the growth of the customer. The customer comfort has been assured by after sales service and support by a trained group of resources. Icon Infotech Ltd. has maintained the strength as preferred ICT solution provider by maintaining good internal resource team, on demand resource team, customer service, and management, strategic partnership with local and foreign expert company.



icon infotech limited

[www.icon-infotech.net](http://www.icon-infotech.net)

## Services Portfolio

The Icon Infotech Ltd. established in 2010 with primary business Intranet & internet. Within the same year the company embarked for selling and servicing hardware & (PC, Laptop, Switches, Routers (etc). ICT Consulting Icon InfoTech Ltd has started the service of providing ICT consulting support as leading. Now Icon Infotech Ltd. having below service portfolio.

### *Nationwide Internet and Intranet solution*

We provide *Nationwide Internet and Intranet (Data Connectivity) solution*, corporate IT solutions and offering various IT services nation-wide. We have the expertise and specialization to provide IT solution such as Internet, Intranet, MPLS, and NPLC.

Icon's services want to help the customers to select the best support option for customer needs. We understand that customer base decision on many factors unique to customer's business environment. That's why all of our service options are designed to provide the right level of assistance and technical expertise when customer needs, where need.

### *Software and hardware solution*

#### **Solutions for Banks and Financial Organizations**

IIL has a unique software house providing integration and automation of big security exchange company like MSSL, UFTCL as well as different government (different ministries like health, education, transport, Different Govt. Office like Transport Pool, nemew) and numerous private sectors including garments, textile, power station etc.

Acquiring a strong footprint in local sector, IIL expanded its venture to offer international standard solution with sBIT, a US software company from Silicon Valley. They are expert in banking software specially in security aspects in financial sectors



# icon infotech limited

[www.icon-infotech.net](http://www.icon-infotech.net)

## Advanced Surveillance Solution

Our Unified Solutions are Simple, Reliable, Scalable and our Market Application Suite are able to make Cloud-ready reports and big data analysis for business intelligence and operation management. We are offering

**Cameras-** Wide range of IP cameras - dome, box, bullet, cube. Special features - Zoom, PTZ, 360, Covert—any form, shape and costumed sized.

**Video Management System-** End-to-end VMS solutions: NVR, CMS with TV Wall, Edge, Mobile, Access Control, POS, Digital Signage, ONVIF.

**Cloud Media Services-** Collect and manage relevant business data to gain insights that generate more revenue.

**Video Analytics-** People counting, queue management, heat map, ALPR, traffic and other security related analytics.

**Digital Signage-** Display and manage live surveillance video and advertisements or announcements on the same TV panel.

**POS Integration-** Electronic receipts from cash register are linked with video and event management. Supports pcAmerica, Aloha and other POS systems.

**Access Control-** Combines access control device activities with video from surveillance cameras to enhance security of the site.

**Encoders and Decoders-** Video encoders and decoders to combine analog CCTV with IP surveillance.

**Network peripherals-** Certified PoE data switches and extended storage devices with technical support.

**Accessories-** Wide range of add-ons: mounts, lenses, dome covers, enclosures, storage, PoE devices, controllers and more. Tools and Utilities- Helpful tools and apps for product demo, project planning, installation and troubleshooting.

We are offering one of the best VDO analysis featuring the following –

**Vehicle Counting-** Monitor traffic to detect and prevent congestion and manage traffic flow by dynamically opening and closing road lanes and redirecting transit to alternative routes.

**Automatic License Plate Recognition (ALPR)-** Let only certain vehicles enter restricted areas - any vehicle with license plate which is not on a white list will be immediately reported.



# icon infotech limited

www.icon-infotech.net

You can also use the ALPR to automatically charge highway tolls.

**Forbidden direction-** Prevent road accidents by detecting vehicles driving in wrong direction. The system will immediately display warnings on electric roadside signs and notify the authorities.

**Object Counting-** Make sure that the number of items being loaded from warehouse on trucks is correct and no items have been omitted.

**Missing Object...** Transported items can be stolen during transit. Avoid such situations by monitoring the vehicle interior and detecting any objects that disappear between scheduled offload locations.

**Motion detection...** Specify what type of motion will trigger predefined events. Depending on the configuration, the object can be anything from a small item falling from a conveyor belt in a production line to a person moving in a restricted area

**Face Detection...** In many situations, typically in factories or automated warehouses, many moving objects appear in a scene but it's only the presence of people that should be noted. Face detection is used to recognize people in predefined areas and alert the controlling personnel or stop the machinery.

**Enter and exit area...** Make sure that any unauthorized person won't enter prohibited area. You can select regions that will be monitored for entrance or exit of people and objects and every such event will trigger a predefined action, for example an alarm.

**Line Crossing...** An event is triggered every time a person accidentally or intentionally crosses a virtual line. This feature can protect properties (burglar trespassing on private premises) or save human lives (passenger falling from platform into a railway track).

**Unattended Object...** Unattended objects, such as shopping trolleys left in a parking lot, can be obstacles for pedestrians and cars. However, an abandoned handbag can also pose a severe security threat in a crowded area. You can use ACTi video analytics to detect unattended items and deal with them properly.

**Tamper...** This feature detects unwanted manipulation with the camera - attempts to break it or refocus and obstruct its view.

**People Counting...** counting how many people and at what time enter and exit. The people counting feature provides you this information as comprehensive graphs so you can make the best decisions regarding item stocking or working schedule management.

**Heat Map...** Increase your revenues by enhancing the store's layout to reflect organization's behavior. You can innovate the product placement strategy, refine promotions and optimize check-out services by using heat map - visual information about customers' density and flow in the section of that business. It would also help to identify any unusual behavior.

**Dwell time...** Improve client satisfaction by providing prompt product consultation when customer is lingering while making product or service purchasing decisions.

**Crowd Detection...** Service customers without delay. You will be automatically notified when the number of customers in the waiting line exceeds the limit so you can open another checkout counter.

**Queue management...** Know exactly how much time client spend waiting in the line and optimize the check-out flow by automatically redirecting customers to proper waiting lines for traffic balancing.



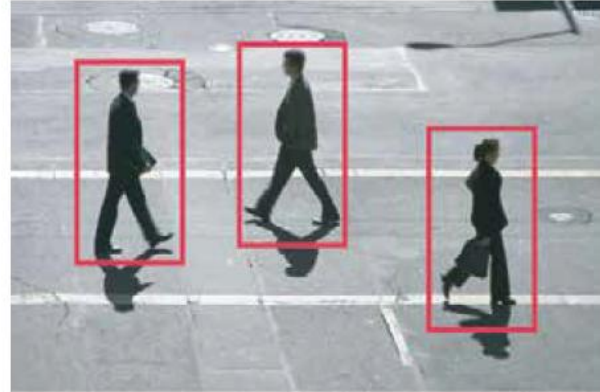
icon infotech limited

www.icon-infotech.net

Face Detector



Motion Detector



We have solutions for sector wise requirement like for banks, corporate house, airport, chain shops etc. Our specialized and highly customized solution would help you to accomplish what you considered even what you missed.

## Network Solution

### *Enterprise Server & Storage Hardware, IT Infrastructure Management and Optimization Solutions*

Icon InfoTech also partners with Cisco for providing Enterprise network solution. Icon Infotech Ltd. prefers Hewlett-Packard (HP), IBM, and DELL for providing Enterprise Server and Storage (SAN, NAS) Solutions as well as IT Infrastructure Management and Optimization Solutions to its wide customer-base. Icon Infotech Ltd. collects Hewlett-Packard (HP) Server and Storage (SAN, NAS) from Bangladesh local market.

### *ICT Consulting*

### **Customized Network Management:**

IIL's flexible network expertise and understanding embraces small office configurations, multiple-sites, or corporate networks. We manage the optimization of client's network significantly reducing the risk associated with unscheduled outages or loss of data. Our experienced technical team realizes the financial impact facing clients business and have a clear understanding of the result of experiencing a network failure. The ability to quickly diagnose the problem to minimize the effect on client business is our challenge. Individually tailored maintenance programs are available to manage clients system remotely with our support. Latest technology instantly alerts us to a client's network or server issue enabling our 24-hour team to respond quickly and resolve any problems.

### **Servers and Service Solutions Based on Linux**

As an innovation house, IIL designs and delivers tailored open source solutions specializing in business sever deployments, network performance, real time replication, bandwidth optimization, application development and internet billing solutions.

Starting from customized mail server, DNS server, Web hosting services, we are capable of providing customized solutions needed to our customers using Linux shell script, php, python etc.

Switching from windows environment to Linux or the reverse needs some specialized skill and we believe we are among the best for doing this kind of transformation.

Deploying Linux based monitoring and logging servers, we have our personalized solution readily deployable in any network.

## **Fiber and Wireless connectivity for internet and intranet**

IIL offers a range of high speed data products, incorporating fiber, broadband and (MPLS technology) exclusively to the Bangladesh business market.

This compelling Business to Business only offer provides extremely low contention ratio's offering you a faster less disruptive data network.

We have established relationships with major data communication providers throughout BD with inter-national connections to off shore markets.

By managing the entire process for you our intent is to take away the hassle and ensure you have a stable, reliable and fast data network to operate your business.

## **Web and Email Hosting Service**

IIL offers a range of hosted services, providing peace of mind, business continuity and data security. From data & website hosting, to Spam/Virus detection and prevention, to Domain Name hosting. We also provide full out sourced Business network provision with fail over replication, providing enhanced performance, reliability and security.

Our hosting services are designed to reduce the total cost of ownership for IT services you pay through a monthly service fee which includes security and backup management.

## **Super Control over Internet and Intranet Content**

Content Control keeps our clients (or any other persons selected as per company rules) away from undesirable website. We assure our clients the following Rock-Solid Security.

### **\* Web Content Filtering**

Cloud-based, award-winning Web content filtering from Open DNS with more than 50 categories of content. No appliance necessary. Effective against proxies, P2P, Web 2.0, adult and more.

### **\* Phish Tank Anti-Phishing**

Industry-leading anti-phishing powered by PhishTank, the most authoritative source of phishing data on the Internet. Protects clients network, organization and its employees from fraudulent phishing scams.

### **\* Malware Site Protection / Botnet Protection**

DNS layer security protects the most vulnerable level of client's network against the latest threats, including viruses, worms and zero-day vulnerabilities.

### **\* White list / Black list**

Let's you decide where users can navigate on clients customized Internet. White list-only functionality available. Content control in corporate environment would prevent good employees doing from bad things. Would improve the working condition and overall productivity.



**icon infotech limited**

www.icon-infotech.net

## Our Team and Organogram

### **Mr. Abdul Awal,** *Managing Director*

Mr. Awal, A renowned & pioneer business personality in the financial sector in Bangladesh. He had completed his BBA and MBA from Chittagong University. At 2005 he started Multi Securities & Services Limited (MSSL) and played an important role specially in the IT sector of DSE and became head of purchase of IT committee in DSE. Under his inspiration and guidance a lot of development in the software and hardware improvement was done in DSE. In the booming era of this sector he started another security, United Financial Trading Co. Limited chaired by him. BMSL Investment Limited was his first footage in financial sectors above from security firm. Along with the financial sectors he is also the Managing Director of Diplomat Properties Ltd, Peoples Radio Limited, Active System Limited, Icon Infotech Limited, the ACE Limited respectively and also the Director of Bangladesh Mutual Securities Ltd, Eastern Logistic Limited and Rangpur Dairy Limited. Among his chaired company, Diplomat Plastic Limited, Active Systems mentionable. He is the elected Treasurer of the Bangladesh Merchant Bankers Association. Besides these he is involved in various social affiliation works. He is one of the honorable and mentionable member of Dhaka Club Limited and VP of MBA Association Chittagong University and life time member of FeniSamiti Dhaka.

### **Md. Maktobur Rahman** *Chief Executive Officer*

Md. Maktobur Rahman, Icon Infotech's Chief Executive Officer, has spent 20 years pioneering Information Technology Career, and his expertise has led him to develop some of the Bangladeshi's most successful and well-known ISP and technology companies. Maktobur Rahman completed his BA (Hons), MA from Dhaka University, and MBA major in HRM from Northern University of Bangladesh. His experience of working with many different companies; as Director & CEO of Sengupta Telecom Ltd, General Manager at AGNI System Ltd, Deputy General Manager at HRC Technologies Ltd, Deputy General Manager of Getco Online Ltd, Coordinator at Dipon Group, Advisor at NRB Telecom Ltd.

### **Md. Hanif Bhuiyan** *Chief Technical Officer*

Mr. HanifBhuiyan, has over Sixteen years working experience in the IT sector. His core responsibilities are analyzing software and hardware requirement for complete IT solution for corporate bodies, specially network design, planning and implementation of different solutions composed of networking, security, backup and customized software automation. He has extensive knowledge in industries best hardware based and software based security solutions including network firewall, monitoring and troubleshooting tools composed of hardware and software for detecting network problems, RF issues, and physical breaching.

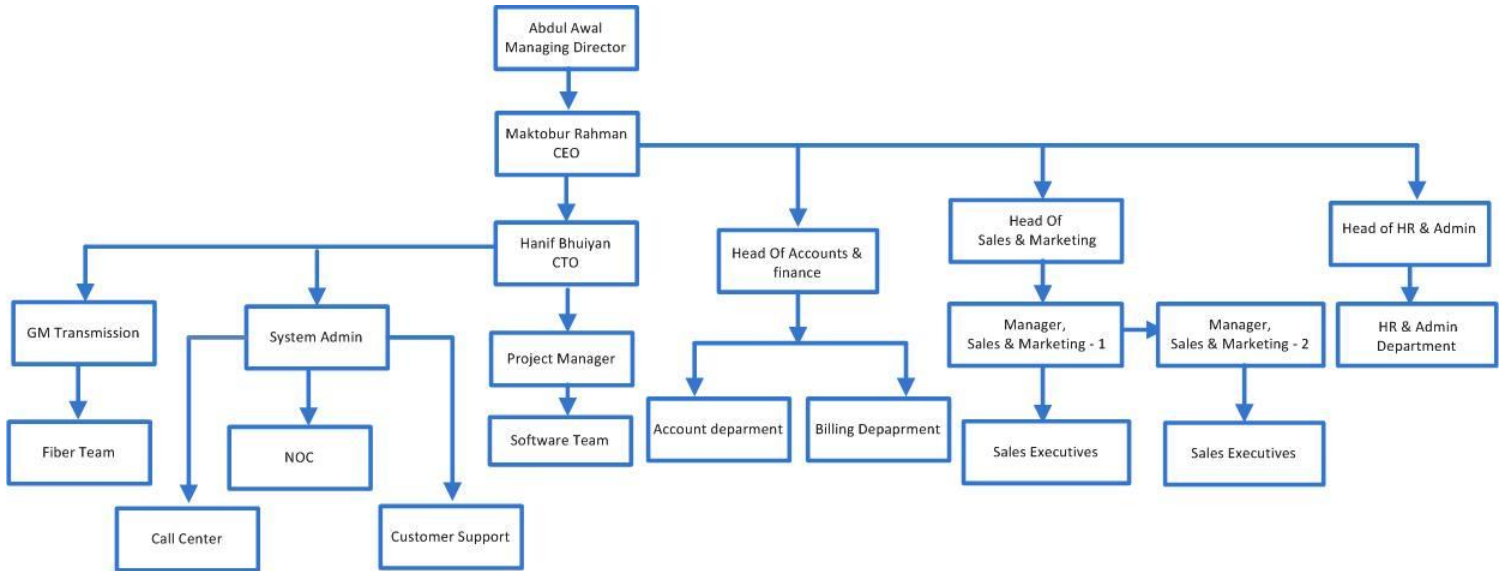


# icon infotech limited

[www.icon-infotech.net](http://www.icon-infotech.net)



## Organogram



Current Organogram Of Icon-Infotech Limited

## Affiliation



# icon infotech limited

[www.icon-infotech.net](http://www.icon-infotech.net)

## Partners



KPMG is a global network of professional firms providing Audit, Tax and Advisory services through a consistent set of multidisciplinary financial and accounting skills and capabilities based on deep industry knowledge with world-wide operations offer impressive statistics with over 1000 offices in 825 cities in 150 countries with over 1,55,000 employees. KPMG's unmatched world-wide presence and understanding of global economics translates into consistent quality of client services. KPMG global clientele consists of many of the world's top Banking and Financial Institutions.

KPMG sees how banking models are evolving and innovative approaches emerging. Yet, the strides are small. Banks need to fast track digital integration throughout their organization. Digitization has to become the foundation for their business. And the need for speed is more important than ever before, as a new banking landscape unfolds, bringing with it a continuous wave of new competitors. The big and strong are no longer guaranteed to win. Speed and agility count just as much...if not more. And the time to accelerate is now.



SAS is the leader in analytics. Through innovative analytics, business intelligence and data management software and services, SAS helps customers at more than 80,000 sites make better decisions faster. Since 1976, SAS has been giving customers around the world THE POWER TO KNOW.

SAS helps you make sense of the message. As the leader in business analytics software and services, SAS transforms your data into insights that give you a fresh perspective on your business. You can identify what's working. Fix what isn't. And discover new opportunities.

We can help you turn large amounts of data into knowledge you can use, and we do it better than anyone. It's no wonder an overwhelming majority of customers continue to use SAS year after year. We believe it's because we hire great people



# icon infotech limited

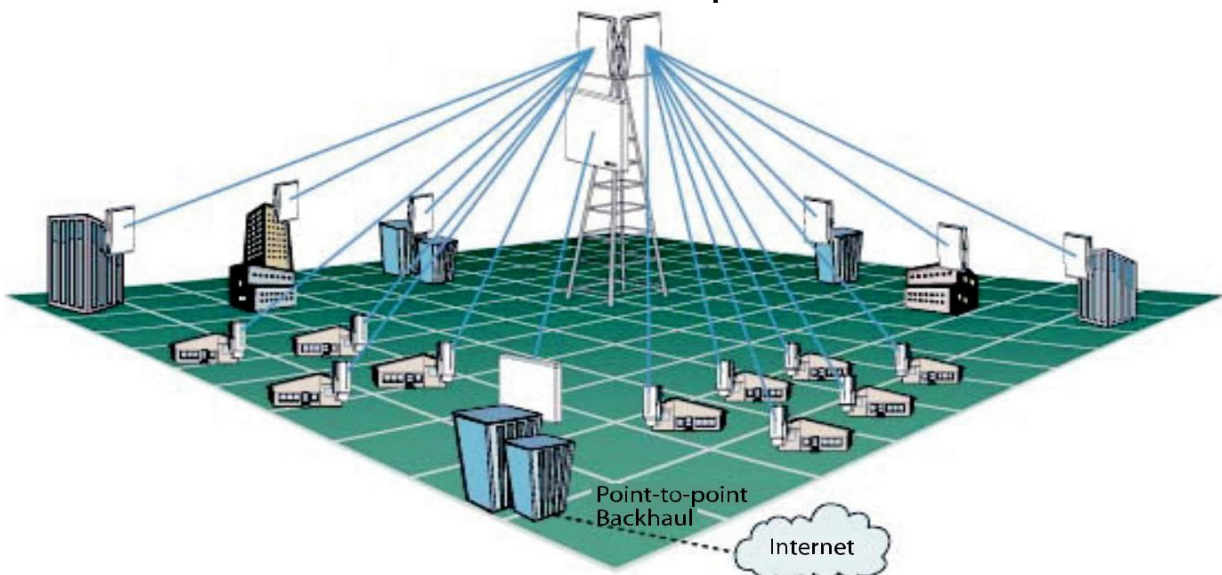
[www.icon-infotech.net](http://www.icon-infotech.net)

to create great software and services.

### icon Provides Wireless Router Network solution



### Point-to-multipoint



# icon infotech limited

www.icon-infotech.net

### **Confidentiality and Copyright Notice**

The document is supplied on the expressed understanding that it is to be treated as confidential and that it may not be copied, used or disclosed to others, in whole or in part, for any purpose except as authorized in writing by Icon Infotech Ltd. Icon Infotech Ltd has prepared this document in accordance with our understanding of requirements based on information provided in documents, meetings and discussions. Any performance or similar statistics represents our best estimates and actual performance of products and services may differ from those indicated in this document because of variations in products, operating environments and other factors beyond our control. This document may contain product names and/or brand names that are trademarks or trade names of companies other than Icon Infotech Ltd.



# icon infotech limited

[www.icon-infotech.net](http://www.icon-infotech.net)

With the vision to be your associates.....

# Thank You



**icon infotech limited**

[www.icon-infotech.net](http://www.icon-infotech.net)